



## **LIBRARY ADMINISTRATION**

Sean Casserley, County Librarian

Tricia Suellentrop, Deputy County Librarian

John Helling, Associate Director for Systemwide Services

Jennifer Mahnken, Associate Director for Branch Services

Susan Mong, Library Foundation Executive Director

Nicki Neufeld, Financial Director

**EDUCATION**

**COMMUNITY BUILDING**

**CONVENIENCE**

**JOHNSON COUNTY LIBRARY  
2015 ANNUAL REPORT**



# 2015

ANNUAL REPORT

I always knew from that moment, from the time I found myself at home in that little segregated library in the South, all the way up until I walked up the steps of the New York City library, I always felt, in any town, if I can get to a library, I'll be OK. It really helped me as a child, and that never left me.

–Maya Angelou

# JOHNSON COUNTY LIBRARY

## OUR VISION

Johnson County Library creates an environment for people to learn, to explore, to enjoy, to create, to connect.

## OUR MISSION

Johnson County Library provides access to ideas, information, experiences and materials that support and enrich people's lives.

# TABLE OF CONTENTS

From the President .....	4
Board of Directors.....	5
From the County Librarian.....	6
Library Useage.....	8
Success Stories.....	10
Comprehensive Library Master Plan (CLMP).....	14
Return On Investment Report.....	16
Central Building Upgrade.....	18
Library Foundation.....	20
By the Numbers.....	22
Donors.....	23
Friends.....	24
Volunteers.....	27
Community Partners.....	28
Finances.....	30
Locations.....	32

## A Letter from the Board President

The Board of Directors of Johnson County Library is committed to the single yet profound goal of fulfilling the mission of the Library to provide access to information in all its forms. Johnson County Library is an important and valued community resource. The Board strives to offer strong and inspired leadership to the County Librarian and his staff as they diligently work to serve the citizens of Johnson County.

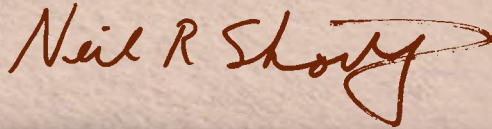
This 2015 Annual Report shows the Library successfully supporting a growing and increasingly diverse County population with standard Library services as well as innovative programs and events. The Library also continues extensive community engagement with outreach programs for students, senior citizens and incarcerated youth. We experienced continued success with our flagship early literacy program, 6 by 6 Ready, to Read and its Spanish language parallel, 6 por 6 Listos Para Leer. The renovation of the Central Resource Library continued through the year, providing bright public spaces and updated amenities requested by our County patrons.

The Library Board committed substantial energies to developing the 2015-2035 Comprehensive Library Master Plan including the groundbreaking Return on Investment Study with the University of Kansas / Edwards Engaged Scholarship Program. This richly-detailed document provides clear and innovative vision for Library service to our community for the next generation. Community input sessions, Library staff conclaves and consultations with County leadership and staff assure us we are responding appropriately to County needs and building the best Library we can for Johnson County's future.

2016 will see significant progress: implementing our Master Plan through capital projects for new and updated libraries; reopening of the renovated Central Library; expanded collection development. This work will benefit from the dynamic partnership of Johnson County government, the Boards of Directors of the Johnson County Library Foundation and Friends of Johnson County Library, hundreds of community and Library volunteers and the dedicated Library staff. It is an honor to serve in their company.

I respectfully submit this report on behalf of Johnson County Library.

Neil Shortlidge  
President, Board of Directors  
Johnson County Library





Neil Shortlidge, Chair

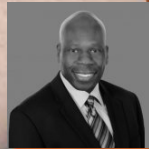
### 2015 Johnson County Library Board of Directors



Nancy Hupp



John Nelson



JR Riley



Pamela Robinson



Amy Amos Ruo



Mitra Templin

Jason Osterhaus, ex officio,  
Johnson County, KS Board of County Commissioners

### 2015 Johnson County Kansas Board of County Commissioners

Ed Eilert, Chair

Ron Shaffer, 1st District

Jim Allen, 2nd District

Steve Klika, 3rd District

Jason Osterhaus, 4th District

Michael Ashcraft, 5th District

John Toplikar, 6th District





Nothing in life is to be feared, it is only to be understood. Now is the time to understand more, so that we may fear less.

–Marie Curie

2015 will be remembered as a signal year for Johnson County Library. Our accomplishments are many and varied, our planning ambitious and deliberate. We have provided high-quality Library services to hundreds of thousands of Johnson Countians of all walks of life and circumstances. We have partnered with hundreds of local and regional organizations to meet Library needs on and off campus. We have kept pace with technological evolution affecting all of our personal, and professional lives. Importantly, we have continued to imagine how your Library can be better, more efficient, more satisfying to all our fellow citizens. I can confidently say: the state of our Library is strong!

Our Library Strategic Plan is built around three core promises we have made to our Library users, and we strive every day to deliver on those commitments.

**EDUCATION** is the defining function of any Library. Johnson County Library is truly a learning organization. In 2015 we supported formal education in schools, universities and in the home-school community with services like Homework Help, Tutor.com and through our many literacy-based kids programs. We also encouraged and cultivated informal learning activities through innovative programs in many subjects for Library visitors of all ages, and through database access in our eLibrary. We have also continued to support significant professional development opportunities for staff at all levels, with the generous support of the Friends of Johnson County Library.

**COMMUNITY BUILDING** is a role Libraries have always played. The Library of the 21st century is more community-centered and service-oriented than ever before. Over the past year we provided free meeting space for hundreds of groups and organizations to share their ideas and accomplishments with their members and the community. We sought significant levels of community input for our long-range planning, and participated in one of the most comprehensive surveys of our community's satisfaction with Library services. Our talented staff hosted hundreds of author events and book discussions, and created personalized reading recommendations for many in the community.

**CONVENIENCE** is a modern need that our Library is meeting across the suite of conventional and innovative services we provide. The Second Saturdays program provides structured, un-scheduled learning activities that easily mesh with busy Saturday schedules. Our robust wireless internet connections at all 13 Library branches make it easy to drop in with your own device and access all our eLibrary has to offer. You can actually do this at home or work, too, with any internet connection! Our eCatalog makes it easy to request and hold books, and drive-through returns help you visit a Library wherever you are in our County.

2016 is off to a big start. Our Comprehensive Library Master Plan was approved by our Board of Directors, and the first capital projects are on the drawing board. Our new Black & Veatch MakerSpace is offering new dimensions to STEAM learning for all generations. The Friends Bookstores are doing land-office business. The Johnson County Library Foundation continues to bring substantial support to Library educational programs.

All of this is possible only with the foresight and leadership of our Board of County Commissioners and their appointees to our Library Board of Directors. I rely daily on their wisdom and guidance as we navigate into the next generation of Library service. As ever, I am deeply appreciative of the talents and integrity of our Johnson County Library staff. It is their commitment to public service that makes this Library a success. I'm privileged to be their partner in this important work.

Sean Casserley

*TS Casserley*  
County Librarian

# LIBRARY USAGE

# 6,157,079

## ITEMS BORROWED

433,657	Population of Service Area
279,806	Number of Registered Users
2,466,264	Number of Visitors
156,961	Reference Transactions
1,859,806	Website Visits
138,760	Program Attendance
250,023	Inter-Library Loans

# LIBRARIES

278,486	Total Square Footage
34,473	Total Service Hours Provided at All Branches
353	Public Computers at All Branches
393,481	Unique User Sessions on Public Computers
234,805	Unique Wireless Sessions
242.6	Library FTEs





# LIBRARY COLLECTION

# 1,176,525

TOTAL COLLECTION

734,232

Books

174,986

eBooks

44,679

Audiobooks

10,370

eAudiobooks

137,758

DVDs

986,738

Online Reference Searches

# PROGRAMS ATTENDED

70,903

Total Program Attendance at All Branches

17,182

Adult Programs

48,487

Kids Programs

## COMMUNITY PARTNERSHIPS AND COLLABORATIONS

### TAX HELP

AARP Foundation Tax-Aide, the nation's largest volunteer-run tax preparation and assistance service, offers free tax preparation help to anyone 50 and older who can't afford a tax preparation service. Retirement or other life changes may make taxes a little more complicated. Friendly personal assistance takes some of the sting out of tax time. For the 17th year, AARP Tax-Aide volunteers provided one-on-one help preparing individual tax returns for middle- and low-income citizens. More than 4,000 folks have benefitted in the past three years. This invaluable partnership guides folks through complicated forms and instructions at locations nationwide. There's no fee and no sales pitch for other services and AARP membership is not required. We do recommend a Library card.

### NATIONAL LIBRARY WEEK

Public, private and academic libraries across the country celebrated the vital role libraries play in their communities during April's National Library Week. Johnson County Library joined the festivities by publishing the winning entries in their annual Bookmark Design Contest. 636 hopefuls yielded 12 winning designers aged 4-1/2 to 40 years and representing all parts of Johnson County. The winning illustrations were printed as 6,000 bookmarks and distributed at the 13 branches of Johnson County Library. The contest, a community favorite, is generously supported by the Friends of Johnson County Library.

### FREEDOM OF ESPRESSO

Your Johnson County Library is a steadfast advocate for freedom of expression. We're equally passionate about an amazing cup of coffee. In 2015 the Johnson County Library Foundation launched Freedom of Espresso, joining the family of cause blends produced by KC's own The Roasterie®. This coffee blend is smooth, slightly nutty, and delicious. Its delectable scent is now wafting from many Library coffee pots. Online and Friends of the Library Bookstore purchases direct a percentage of proceeds to the Foundation.

## FRIENDS EXPAND AT CENTRAL LIBRARY

Friends Board and staff have been hard at work for over a year planning, designing and getting settled in at the new Friends Bookstore at Central Library. This innovative partnership promises expanded exposure for the support group, and increased revenues from sale of used books, CDs and DVDs. At 820 square feet the Central store will be the largest of the three Friends' operations. 700 shelf feet have capacity for more than 8,000 titles. The Friends anticipate the Central store will keep pace with annual sales at Antioch, about \$65,000. The Central store will also remain open during author and book events in the new Carmack Community Room right next door.

## THE RAISING OF AMERICA

Johnson County Library joined forces with The Family Conservancy and United Community Services of Johnson County to screen "The Raising of America: Early Childhood and the Future of Our Nation." This documentary on early childhood poses the question: "Why do we make it hard as a nation for our children to thrive?" The hour-long film weaves together the latest discoveries in neuroscience with stories of American families struggling to create the nurturing environments all babies and young children need to thrive. 100 gathered for the film and a spirited discussion about poverty in 21st-century Johnson County.



## 2015 WRITERS CONFERENCE

More than 200 writers of differing ages and backgrounds gathered for the Library's first-ever Writers Conference. New York Times best-selling author Jessica Day George was featured keynote speaker. Workshops and author talks covered the complete writing experience, from plotting to publishing to marketing and more. Writers of all walks were welcomed at no charge. This special community partnership was presented by Johnson County Library with the LDStorymakers. Their mission states they "...reach out to authors and help them improve their craft. We believe the more people become comfortable with a pen and a book, the more civilized our society will grow." A noble sentiment with which the Library concurs!

## HAPPY BIRTHDAY, 6 BY 6!

The Library's 6 by 6, Ready to Read program turned 6 years old in 2015. This successful and popular program emphasizes the six skills that parents and caregivers can help children develop before they learn to read. Antioch, Blue Valley, Corinth, Edgerton and Gardner Libraries celebrated with stories, songs, fingerplays and movement activities. There was even a "Story Mob" at Antioch Park! Our special celebration was joined by corporate sponsors and community partners including the Johnson County Library Foundation, Royals Charities and the John W. & Effie E. Speas Memorial Trust, Bank of America, N.A., Trustee.



## MEET THE 2015 PINNACLE AWARD WINNERS

A pioneering publisher, a reading reptile, a fringe founder and an advocate attorney. 2015's Pinnacle Award winners did not lack in alliteration. More importantly, they boast an abundance of excellence in their respective fields. The Johnson County Library Foundation recognized each with a prestigious Pinnacle Award, given for the past 15 years to Kansas City community members who work tirelessly to make our city a better place to live for all.

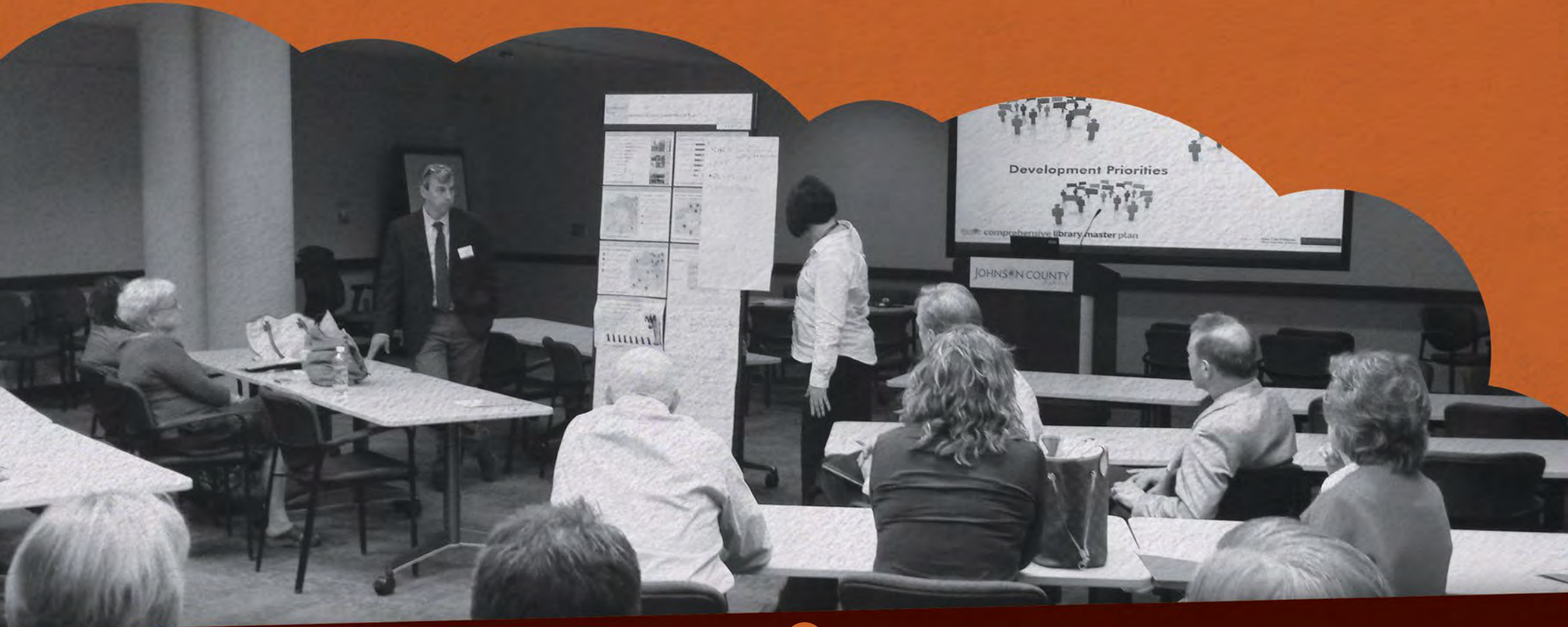
2015 Awardees: Debbie Pettid and Pete Cowdin, Cheryl Kimmi, Clara Reyes and Fred Logan.

The Johnson County Library Foundation helps the Library build its collection and resources, to offer programs for patrons of all ages and to better serve the needs of our community. They do this by securing and managing donations from individuals, businesses and foundations to support the Library above and beyond what public funding provides. The Pinnacle Awardees exemplify this commitment to improving Johnson County's quality of life.





# COMPREHENSIVE LIBRARY MASTER PLAN



Johnson County Library culminated a multi-year effort and produced the Comprehensive Library Master Plan. This plan proposes ambitious Library growth for the next 20 years, paralleling county growth and encompassing a variety of facilities, circulation, collections and other studies and plans from the previous five years.

The Plan was guided to fruition by San Francisco-based Group 4, and was informed by broad community input from citizens, educators, elected officials, Library professionals and civic leaders. The findings: an integrated network of Libraries provides services for users who regularly visit more than one branch; and expansion is necessary in northwestern and southeastern Johnson County.

The Library Board of Directors, appointed by the Board of County Commissioners, has approved implementation of the plan and has established four capital priorities for the next five years:

- building a (long-promised) new branch in western Shawnee;
- relocation of the Lenexa branch to the new City Center venue;
- expanding services in the Blue Valley area of Overland Park;
- replacement of the Corinth Branch in Prairie Village.

2016 will see robust planning and building programming which will welcome even more input and ideas from citizens at a series of facilitated sessions.

# RETURN ON INVESTMENT STUDY

As part of 2015's master planning process, Johnson County Library partnered with researchers from the University of Kansas Edwards Campus to analyze the return for every tax dollar invested in the Library system. The ROI study was privately funded through the Johnson County Library Foundation.

The project built on the work of 40 similar studies from across the country. Past library ROI studies have used one of two methods for calculating a library system's value:

## MARKET VALUE

This direct approach puts a dollar figure on all library goods and services based on their current going rates in the private sector. How much does it cost to rent a conference room from a hotel instead of reserving one for no charge at the library, for example?

## CONTINGENT VALUATION

This indirect approach asks the public to put a price on the Library's benefits to them and their neighbors. KU Edwards asked a representative sample of Johnson County residents, "How much would you pay a month to use the Library – and how much would you pay so others in your community could do the same?"

What sets KU Edwards' work apart, other than its rigorous academic standards and conservative estimates, is a novel hybrid of both methods. Where past studies used either a market value method or contingent valuation, KU Edwards looked at the full picture. They even analyzed how Library spending benefits the local economy.

SEE THE FULL STUDY AT  
[JOCOLIBRARY.ORG/ROI](http://JOCOLIBRARY.ORG/ROI)

After the researchers crunched all the numbers, here's how the results shook out:

**\$74.6  
MILLION**

**\$96.2  
MILLION**

IN ECONOMIC  
IMPACT AND  
SOCIAL  
BENEFITS

ADD IT ALL UP AND YOU HAVE A

**313%**

RETURN FOR EVERY ONE OF  
YOUR TAX DOLLARS INVESTED IN  
JOHNSON COUNTY LIBRARY.

#### MARKET VALUE

Johnson County Library's annual goods and services offered have a private market value of \$74.6 million.

Library spending injects an estimated \$14.8 million into the local economy.

#### CONTINGENT VALUATION

Among surveyed residents who put a price on Library access, the estimated social benefits of the library equal \$6.8 million.

**\$14.8  
MILLION**

**\$6.8  
MILLION**

#### SATISFACTION SCORES FROM ROI SURVEY

PHYSICAL MATERIALS	<b>93%</b>
DIGITAL MATERIALS	<b>73%</b>
PRINT PAPERS AND MAGAZINES	<b>84%</b>
REFERENCE DESK HELP	<b>87%</b>
COMPUTER AND INTERNET USE	<b>83%</b>
USE OF LIBRARY ROOMS	<b>87%</b>

# CENTRAL BRANCH UPDATE

Years of research, months of planning and 280 days of construction were reaching their destination at year's end. The Library launched and completed a \$3.6 million renovation of Central Resource Library at 9875 West 87th Street in Overland Park. Major facilities improvements promise to sustain the heavy traffic we see at this location – more than 1,000 people daily. New features of the building will make it easier to use and enjoy Library activities and programs. Favorite, new and expanded services will make your visit productive and satisfying.

## FACILITIES IMPROVEMENTS

- bright white ceiling tiles – 60,000 square feet of them!
- fresh new carpeting
- a brand-new chiller unit regulates temperature for physical comfort
- more electric power when you BYOD – Bring Your Own Device

## NEW FEATURES

- moved the circulation desk
- returns station is to the left on the main corridor
- improved restrooms
- expanded number of study and community rooms – all told, we're providing you with 6,200 square feet

## LIBRARY SERVICES

- enlarged, improved, amazing 1,700 square feet Black & Veatch MakerSpace
- 60+ public computers and a print station available closer to the front of the building
- Carmack Community Room
- new Friends Bookstore

The Central Building renovation is a successful collaboration with the Johnson County Public Building Commission, Library leadership and the County Facilities department. All of this wonderful improvement is made possible by public support for the Library. It's you, our citizens and patrons, who recognize the value and worth of libraries in your community, and all of us are deeply grateful for your sustaining vision.





Dear Patrons,

As I reflect on the accomplishments of the Johnson County Library Foundation over the past year, I can't help but be "WOWED."

Each year, we strive to impact and improve the lives of our community through the programs and support that we offer at the Library. And, this year, more than ever, I feel that we are achieving that goal.

As you may know, last year we underwent a major renovation at Central Resource Library. With that renovation, we were not only able to expand our spaces to be used by the public, but we were also able to expand our services. And, thanks to the generous support of the Library Board and the Board of County Commissioners, we will continue to expand our reach throughout Johnson County in the coming years.

In our innovative new space, we are now able to offer more public meeting rooms, a full service bookstore sponsored by the Friends of the Library, expanded children and teen spaces, and of course, our amazing Black & Veatch MakerSpace.

In that space, we are able to witness incredible creativity helping both students and patrons learn more about science, technology, entrepreneurship and math. That incredible learning environment is possible thanks to your generous donations and our corporate partnership with Black & Veatch.

We continue to grow our 6 by 6, Ready to Read program that helps young learners develop valuable skills for reading. Not only have we expanded the programs in our branches, we are also now sharing this program in a local domestic violence shelter among other partner organizations in the community.

We are most excited about our fall fundraiser that will take place in October of 2016 called "The Library Lets Loose" to celebrate the Foundation's 20th Anniversary. This celebration will be held in Central Resource Library and will feature local foods, cocktails, incredible local talent, and a festive spirit to celebrate all of our accomplishments of the last 20 years. We hope that you can join us for this fun evening!

Finally, we are incredibly thankful for your continued financial support. Each day, we are able to make a difference in the lives of our patrons through our first-class programming. We strive to serve all in our community from our youngest toddlers just learning to read from board books, to our senior patrons accessing multimedia materials, to our aspiring entrepreneurs using the resources of our treasured librarians. Please consider making a tax deductible donation today to continue this great work.

Sincerely,

A handwritten signature in cursive script that reads "Ann Walter".

Ann Walter

President, Johnson County Library Foundation

# FOUNDATION BOARD

Erwin Abrams

Betty R. Anderson

Anne Blessing

Lynne Brown

Sean Casserley

Ava Christie

Jason Glasrud

Zack Hangauer

Barbara Head

Mandi Hunter

Karen Loggia

Royceann Mather

Caroline McKnight

Denise Mills

Angela O'Kane

Nitin Pai

Dan Robeson

Doris Royals

Michael Schaadt

Neil Shortlidge

Sandy Wahoff

Craig Wakeman

Ann Walter

Kelly Ye

Bob Zender

## FOUNDATION MISSION STATEMENT

The Johnson County Library Foundation's mission is to build an endowment for the Library's collection and secure support for key lifelong learning programs offered by Johnson County Library.



Johnson County Library  
Foundation





# FOUNDATION BY THE NUMBERS

**1 NEW BLACK & VEATCH MAKERSPACE** partnership forged and funding secured, increasing public access to innovative technology.

**313% ROI STUDY** The KU Return On Investment Study showed the community receives \$4.13 in public benefit for every dollar it spends on the Library.

**5 NEW 6 BY 6 EARLY LITERACY INTERACTIVE SPACES** funded by the Foundation for Antioch, Blue Valley, Corinth, Edgerton and Gardner Libraries, providing a destination for families to enjoy literacy-rich play areas.

**976** sessions provided through the Homework Help program in 2015 thanks to your support.

**613 STUDENTS** found help online through Tutor.com to aid in everything from Algebra to AP test prep to writing assistance to serve students from 3rd grade through college.

**16,976 CHILDREN** participated in Summer Reading, preventing the “summer slide” that commonly occurs when children stop reading over the summer, funded in part by the Foundation.

**\$50,000** in technology funding was secured to upgrade the Carmack Community Room and Training Lab at Central.

**\$83,000** provided to the Collection allowing the Library to expand access to students in the Shawnee Mission School District.

**\$240,000 IN LIBRARY PROGRAM SUPPORT WAS PROVIDED THROUGHOUT 2015 INCREASING IMPACT AND ACCESS FOR CITIZENS ACROSS JOHNSON COUNTY INCLUDING THE FOLLOWING AREAS:**

- Homework Help & Tutor.com
- 6 by 6, Ready to Read in English and Español
- Summer Reading program support
- STEAM program support and technology funding through Black & Veatch MakerSpace
- Programs for incarcerated teens
- Civic engagement through the Lauffer Civic Engagement Fund
- *elementia* teen 'zine and other writing events through the Joan Berkley Writers Fund

**\$55,000 +**

John W. & Effie E. Speas Memorial Trust,  
Bank of AM, N.A., Trustee

**\$25,000 +**

Black & Veatch  
Hall Family Foundation  
William T. Kemper Foundation

**\$20,000+**

CPS Foundation, Inc.

**\$10,000+**

Google Fiber

**\$5,000+**

Ewing Marion Kauffman Foundation  
J.E. Dunn Construction Company  
Logan Logan & Watson, L.C.

**\$3,000+**

Baker & Taylor  
Friends of the Johnson County Library  
PGAV Architects  
PNC Foundation  
R.A. Long Foundation  
V & H Charitable Foundation

**\$2,000+**

G. Kenneth Baum & Ann Baum  
The Helen S. Boylan Foundation  
Michael & Karmel Carothers  
Charles & Virginia Clark  
The Flo Harris Foundation  
Michael C. Kirk Foundation  
Johnson County Bar Association  
Junior League of Kansas City  
Overland Park Rotary Foundation  
Susanne C. Shutz  
Stinson Leonard Street LLP  
Waddell & Reed  
Walmart

**\$1,000+**

Bank of Blue Valley  
William R. & Anne Blessing  
BMO Harris Bank  
Joan & Bert Berkley  
Blue Heron Foundation  
Ben Craig  
Creative Planning, Inc.  
Fred DeSiegardt

Garmin International, Inc.

Mark & Nancy Gilman  
Zack & Susan Hangauer

Tyler Harms  
High Plains Cattle Co  
Brad Korris Painting  
KU Edwards Campus  
Leaderfuelnow (Denise Mills)

Lowenstein Family SF - "C" Reserve Fund  
of the JCC of GKC

Midwest Tape  
McCownGordon Construction, LLC  
Overland Park South Rotary Club  
Ann Holmes Parker Foundation  
Selective Site Consultants  
Target Corporation  
Tension Envelope Foundation  
Dale & Vickie Trott  
The Weitz Company

**\$500+**

American Library Association  
Balancepoint, Inc.  
Gary & Lynne Brown  
Gary & Kathy Bussing  
John & Kay Callison  
The Clark Enersen Partners  
Consolidated Foundation Kansas City  
Steve & Josie Foote  
Barbara Head  
David M. Hax  
David & Peggy Hendershot  
Johnson County Community  
College Foundation

Johnson County Manager's Office  
Royceann Mather  
Rob & Caroline McKnight  
Roger McMahan  
Sam & Janice Olsen  
Nitin & Ann Pai  
Prosser Wilbert Construction, Inc.  
Recorded Books, Inc.  
Manuel & Clara Reyes  
Mary Maughn Ruf  
Patricia Suellentrop  
Troutt, Beeman & Co., P.C.  
Bryce & Ann Walter  
West Star Development  
Patty Zender

**250+**

Constance Allard  
The American Radio Relay League, Inc.  
The Atha Family Charitable Fund  
William & Maureen Berkley  
Ann Bremer  
M. Helen Briggs  
Perry & Kathryn Culver  
Linda Filby-Fisher  
John & Ruby Foret  
Patricia A. Gallagher  
Jason & Brooke Glasrud  
Steve & Kristin Hansen  
Hunter Law Group, P.A.  
Johnson County Community  
College Foundation

Sharon Maisch  
Maureen McGinty  
Janis McMillen  
Don & Norma Moeller  
Grant & Susan Mong  
Reese & Audrey Pollard  
Robert L. Potty  
Amos L. Roberts  
Warren & Betty Jane Robinson  
David & Jane Ross  
Neil & Renee Shortlidge  
Carol J. Snyder  
Super Family Foundation  
Jeffrey & Marlys Waters  
Ken Werne  
Mike Zakoura

**\$100+**

Stephanie & Jim Abbott  
Erwin & Phyllis Abrams  
Scott Allard  
Betty R. Anderson  
Dana & Jan Anderson  
Erik & Heather Anderson  
Anonymous  
Raymond & Sydney Backstrom  
Judie Becker  
Emily D. Berkley  
Mary Birch  
Michael A. Boehm  
Norma Cantu

Michael & Ava Christie  
Sidney & Catherine Collins  
John & Carol Cowden  
Hugh Cowdin  
The Creativity Connection  
James & Marsha Daley  
Greg Deitch  
Antoni & Sybil Diehl  
Daniel & Janet Dubrava  
Pat Elrod  
Jeffery & Cynthia Enright  
Clark & Helen Fisher  
Dolores Furtado  
B. William & Cheryl Ginsberg Fund-  
Jewish Community Foundation of KC  
Scott & Sarah Glasrud  
Amy Goldstein  
Larry & Ann Graham  
Christi Haines  
Nate & Kim Harbur  
Dave & Kate Hauber  
John & Lyndsey Helling  
Carl & Lauren Helmstetter  
Nicholas & Julie Heng  
Nancy Hupp  
Alan & Pam Jacobsen  
Harrison & Kelsey Jones  
Phyllis E Kemper  
Adrienne Kilbride  
Cheryl Kimmi  
Lynn & Ann Kindred  
Paul & Suzanne Koontz  
Nancy M. Kraft  
Jacqueline Landahl  
James & Jennifer Lane  
Eric & Lindsay Lau  
Ruth Leiter  
Fred & Carol Logan  
Karen Loggia  
Graham & Helen Marcott  
Reginald Marselus  
Rex & Donna Martin  
Paul & Karen Marx  
Rich & Lynn Maxwell  
Ellen McCarthy  
Kathleen McGinley  
Robert & Freda Mendez Smith  
Merrill Companies

John & Angie Nelson  
Scott & Nicki Neufeld  
Oakshire Homes Association  
Steve & Angela O'Kane  
Charles & Jane Olsen  
Robert & Colleen Palmer  
Manuel & Lillian  
Gonzalez-Pardo  
Peter Peterson  
Rebecca Phillips  
Elaine Pittman  
Nicholas & Mary Ann Powell  
Rod & Pam Richardson  
Marcia Rinehart  
Dan & Sherri Robeson  
Lewis H. Roht  
Joan Roney  
Jeffrey D & Rosina A. Root  
Robin & Doris Royals  
John & Amy Ruo  
Michael & Brenda Schaadt  
Mary Schmidt  
R&ell L. Sedlacek  
Jill & Leonard Singer  
Jeannine Smith  
Melinda Speak  
Michael & Veronica Spidell  
Sprint  
Arthur Stern  
Brad & Kimberly Stratton  
Richard & Donna Sutton  
Marvin Taylor  
Roger & Mitra Templin  
Joan Toben  
Robert & Sandra Wahoff  
Ronald E. & Laurie Walker  
Noreen Ward  
Joe & Nancy Waters  
Warren W. & Connie Weaver  
Samuel & Ruth Wellman  
Stephen T. & Anita Wertz  
Robert & Deborah Wheeler  
Morris & Jean Wise  
Mike & Candy Yakimo  
Bill & Kelly Ye  
Bob & Adriane Zender

# FRIENDS OF JOHNSON COUNTY LIBRARY



The mission of the Friends of Johnson County Library is to support the Johnson County Library system by promoting community involvement and interest in the Library's functions, services, resources and needs, and by raising supplementary funds.

The Friends of Johnson County Library helped establish the Library more than 60 years ago. We are still going strong and continue to support the Library through advocacy, fundraising and volunteering.

The Friends, a separately incorporated 501(c)(3), are the voice of the Library in the community. We advocate to elected officials, community groups and organizations about the importance of Libraries and the value they bring to our community. Our dedicated Friends members work to make Johnson County Library one of the strongest and best libraries in the country.

The Friends raise significant funds to support the Library and the Library Foundation. In 2015 we contributed almost \$150,000 from our two Library bookstores, online sales and the annual summer sale. These revenues were generated from more than 9,500 boxes of donated books and AV items – that's about 240,000+ items weighing roughly 485,000 pounds!

Libraries are essential to a lively and educated community. The Friends of Johnson County Library are privileged to support the many contributions to quality of life, education and a strong community provided by Johnson County Library – our Library.

A handwritten signature in cursive script that reads "Rebecca Phillips".

Rebecca Phillips

President (incoming) Friends of Johnson County Library

## 2015 BOARD OF DIRECTORS

Kathy McGinley, President

Gerald "Jerry" Hodges

Dorothy Hughes

Kate Kaltenbach

Lindsay Lau

Jim Minges

Lindsay Mohn

Rebecca Phillips

Kristen Shipp

Gloria Snowden

Julie Steiner

Kathy Tiemeier



1

volunteer on Friends online sales team in 2004

17

volunteers on Friends online sales team in 2015

\$3,900

first-year sales

\$900,000

sales since 2004

38,000

items sold since inception

\$500

selling price of The Standard Edition of the Complete Psychological Works of Sigmund Freud

INTERNET SALES

## COUNTRIES RECEIVING FRIENDS ONLINE SALES SHIPMENTS:

United States, Australia, Brazil, Belarus, Canada, Chile, China, France, Germany, Italy, Malaysia, Mexico, New Zealand, Norway, South Africa, Spain, Switzerland, United Kingdom.

# FRIENDS BY THE NUMBERS

\$344,000

Gross revenue from memberships, donations, used book sales, retail book sales at events and bookstores.

5,000 sq.ft. &  
50 volunteers

Friends sorting operations at Pine Ridge Business Park, Lenexa

700

Active members

2 & \$93,000

Friends Used Bookstores at Antioch and Blue Valley Libraries and their total 2015 revenue

\$64,725

Sizzlin' Summer Book Sale revenue hosted at Johnson County Community College

\$143,000

Online sales revenue via Amazon, AbeBooks, Alibris and eBay

17

Volunteers dedicated to listing and shipping online orders

11 & 5

Foreign countries and continents where 2015 sales were shipped

## SUPPORT FOR LIBRARY ACTIVITIES

- Weeded items purchased
- National Library Week Bookmark Design Contest
- 6 by 6 early childhood literacy program
- Staff professional development
- The Guide, the Library's trimesterly magazine / calendar

**ADVOCACY** The Friends of Johnson County Library, Inc., a separately incorporated 501c3 organization, actively communicated with elected officials and the public in 2015 to support approval of the Comprehensive Library Master Plan and an increase in public funding for Libraries.



# Johnson County Library was founded by volunteers. Our success relies on their dedicated service.

## VOLUNTEERS ANNUALLY GIVE HOURS AND ENERGY TO SUPPORT LIBRARY ACTIVITIES AND PROGRAMS LIKE THIS:

Shelve books | Work in offices | Process book donations  
Support author events and programs | Staff Bookstores and Sales | Research genealogy ... and more!

## ANNUAL HOURS OF VOLUNTEER SERVICE BY LIBRARY SECTOR

2,058	Program support
19,185	Friends
18,851	Clerical and Circulation
4,907	Teens
1,587	Boards
<b>46,588</b>	<b>Total volunteer hours 2015</b>

## LIBRARY VOLUNTEERS ARE:

Individuals | Corporations | Teens/Academic Service Credit  
Retired Professionals | Affinity Groups | Service Clubs  
Worship Communities

1,132	Total unique volunteers
22.5	Full time positions replaced with volunteer hours
\$1,074,785	Contributed value by national standards equating one volunteer hour at \$23.07
<b>\$544,613.72</b>	<b>Salary savings for the Library based on the average salary of a page</b>



VOLUNTEERS

# COMMUNITY PARTNERS

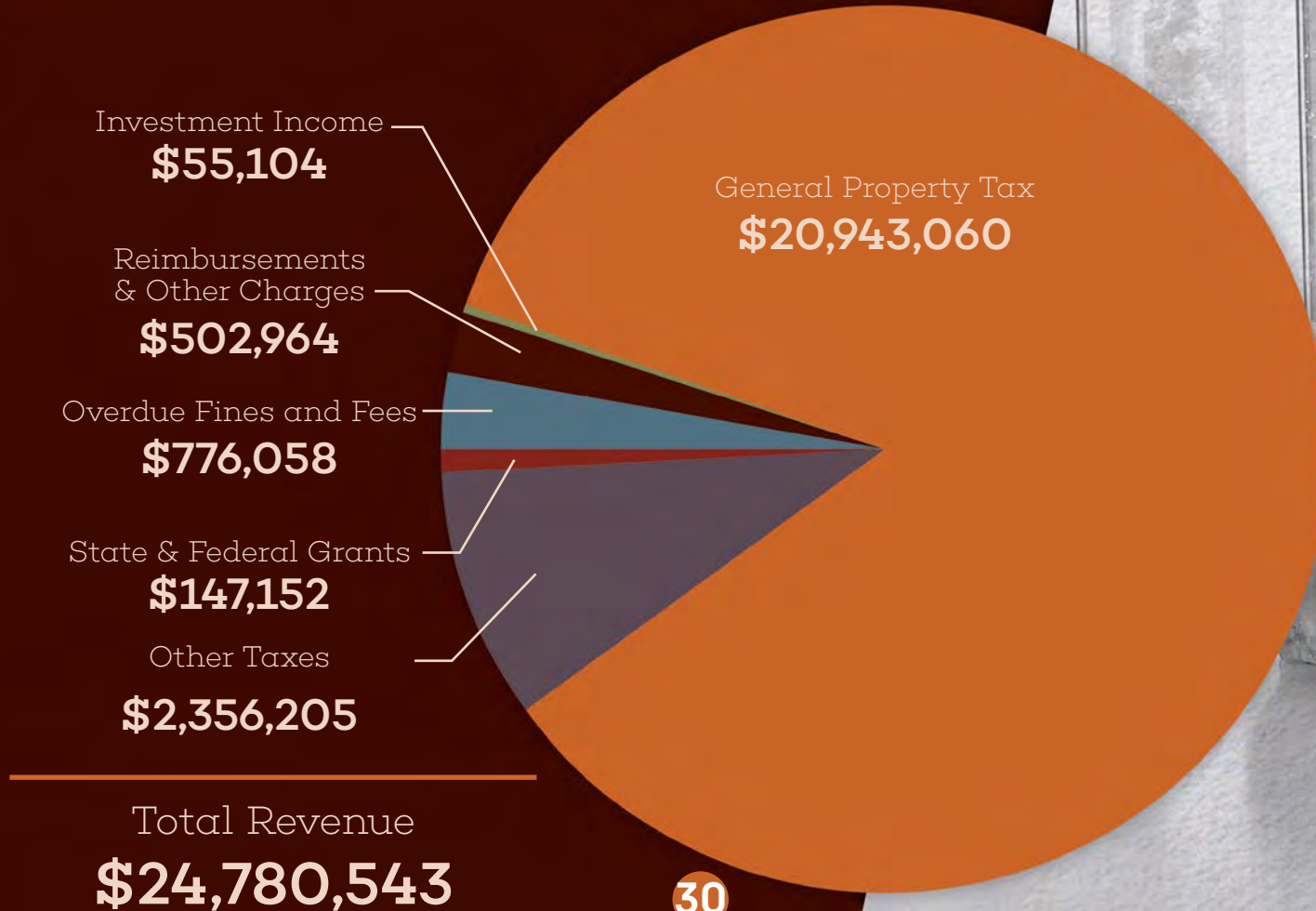
Access House	Blue Valley School District	Cypress Springs Alzheimer's Center	Greenwood Terrace	Johnson County Community College STEM Girls Conference
Adolescent Center for Treatment	Blue Valley School District CAPS	DeSoto Food Pantry	Growing Futures Early Education Center (Formerly Shawnee Mission Head Start)	Johnson County Department of Corrections
Adult Residential Center	Global Business Entrepreneurs	DeSoto School District's Parent as Teachers	Harmony Middle School	Johnson County Department of Corrections Adult Residential Center
Adventure Time Preschool, Church of the Nazarene	Blue Valley School District Preschool Fair at Hilltop Early Education Center	DeSoto TriCentury Bank	Heritage Center at Jewish Community Center in Overland Park	Johnson County Extension Master Gardeners
Advice and Aid Pregnancy Center	Blue Valley West High School	Edgerton, City of	Highlawn Montessori	Johnson County Genealogical Society
Alice's Little Angels Preschool	Boy/Cub Scouts and Eagle Scouts	Edgerton Elementary	Hocker Grove Middle School	Johnson County Health Department
All Around Child Daycare	Brighton Gardens, Prairie Village	Evening Reporting Center, Olathe	Homeschool	Johnson County Human Services, Department of Aging and Housing
Alpha Gamma Retired Shawnee Mission Teachers	Broken Arrow Elementary	Faith Book Club, Overland Park	Homestead Assisted Living of Lenexa	Johnson County Juvenile Detention Center
American Heritage Girls at St. Michael's	Brookdale Place of Overland Park Senior Living	Federal Reserve Bank, Kansas City, Missouri: Professional Development Teacher Workshop	Hope Lutheran School	Johnson County Juvenile Intake and Assessment Center
Apache Elementary	Brookridge Elementary	Field Trip Club	House of Children Preschool at Starside Elementary School	Johnson County Museum
Arbor Square Apartments	CASA (Court Appointed Special Advocate) of Johnson and Wyandotte Counties	First Assembly of God Church Royal Rangers	Housing and Credit Counseling Inc.	Johnson County Montessori
Atriums, Overland Park	"Changing Lives Through Literature" Probation Book Group	First Lutheran Church at State Line Road	Hyman Brand Hebrew Academy	Johnson County Park and Recreation
Aubrey Bend Middle School	Christian Early Childhood Association Summer Conference	Forum, Overland Park	Indian Woods Middle School	Johnson County Sheriff's Office
Babies "R" Us, Overland Park	City of Shawnee Benefit Raffle	Foundations	JT's Grill, DeSoto	K-State County Extension
Barstow School	Claire Caterer Author Event	Gables Assisted Living	John Diemer Elementary School, Science Night	KCPT Tech Day for Teachers and Educational Professionals
Barstow Writing Workshop	Claridge Court, Prairie Village	Garden Terrace of Overland Park	Johnson County 4-H	KCUR Up to Date
Bishop Miega High School	Comanche Elementary	Gardner Elementary	Johnson County Community College Basic Skills Class	K&M BBQ
Blue Valley Graphic Novel Craft Project	Core4 Career Expo with County DTI	Gardner Historical Museum	Johnson County Community College Child Development Class	Kansas City Community Center, Kansas City, Kansas – University of Kansas Upward Bound Program
Blue Valley North High School	Country Club Bank in Monticello	Gardner Parks and Recreation	Johnson County Community College Conference for Middle Grades	Kansas City Senior Theatre
Blue Valley Northwest High School	Country Kids Daycare	Girl/Brownies Scouts	Johnson County Community College Continuing Education	Kansas Securities Commission
Blue Valley Parents as Teachers Reading Under the Stars Evening Event	Covenant Place, Lenexa	Girl Scout Expo at Johnson County Community College		
Blue Valley Parks and Recreation "Touch-a-Truck" Event	Cure of Ars Book Club at Aixois Restaurant	Goddard School, Overland Park		
		Grand Star Elementary		

Kansas Statewide Broadband Conference	Merriam Summer Passport Program	Pawnee Elementary	Second Saturday Art Installment at Antioch Library	Silvercrest at Deercreek Assisted Living, Overland Park
Kansas Workforce Partnership	Mid-America Library Alliance YA Workshop	Pet Partners	Senior Health Insurance for Kansas	Sonshine Preschool
Kiddie Kollege	Mission Health Department	Pets for Life	Senior Hills Living	Special Beginnings Early Learning Center
Kiddie Korner, DeSoto	Mize Elementary	Philanthropic Educational Organization	Senior Outreach Deposit Collection Replenishment	Spring Hill Chamber of Commerce Silent Auction
Kids at Heart Daycare	Monticello/Mill Creek Activity Center	Pioneer Preschool, Grace Covenant Presbyterian	Senior Fest at Ritz Charles, Overland Park	Spring Hill Recreation Center
KinderCare	Moonlight Elementary	Pioneer Ridge Middle School	Sharon Lane Health Services, Shawnee	Sprint Campus Asian Heritage Month Event Exhibit
Lakeview Village	Morse Elementary	Poetry Month Display at Lackman Library	Shawano Elementary	SRS
Lamar Court Assisted Living, Overland Park	Mount Holyoke College	Positive Aging Coalition	Shawnee (Old Shawnee Days)	Stanley Elementary
LaPetite Academy	Mount Holyoke Kansas City Alumnae Club	Prairie Learning Center	Shawnee Healthy Lawn Expo	Stratford Commons, Overland Park
Latino of Tomorrow, Kansas City, Missouri	Mount Olive Lutheran School	Prairie Star Middle School	Shawnee Healthy Yards Exposition	Sunflower Apartments, Merriam
Latino Outreach Services	NCLR Family Expo, Kansas City Convention Center	Primrose Preschool, Overland Park	Shawnee Hills Senior Living Center	Sunflower Elementary
LDStorymakers	Nativity Parish School	Primrose School Teachers of Overland Park	Shawnee Mission East High School	Stratford Commons, Overland Park
Leawood Middle School	Nieman Elementary	Prince of Peace Catholic School	Shawnee Mission Head Start	Tallgrass Creek Assisted Living, Overland Park
Leawood Middle School Book Club	Northeast Johnson County Chamber of Commerce Leadership	Raytown High School	Shawnee Mission Medical Birth Center Waiting Room	Town Village, Leawood
Lending Library of Johnson County Court Services	Northeast Johnson County Chamber of Commerce Silent Auction	Rhein Benninghoven Elementary	Shawnee Mission Northwest High School	Trailwood Elementary PTA
Lenexa Community Center	Old Mission UMC Preschool	Rio Theatre, Overland Park	Shawnee Mission Parents as Teachers	United Community Services
Lenexa Fire Department	Old Settler Days	Rockhurst University	Shawnee Mission Parents as Teachers Play Center	Valley Park Elementary
Lenexa Food Truck Frenzy	Overland Park Elementary	Rosehill Elementary Reading Night	Shawnee Mission School District College Night for Latino Students	Village Presbyterian
Lenexa United Methodist Preschool	Overland Park Mothers of Preschoolers	SAM at Adult Residential Center	Shawnee Mission School District Parents of Gifted Students	Village Shalom Health Fair
Little Sunshine Playhouse	Overland Park Place Senior Living	SAW at Treatment Community	Shawnee Mission West High School	Vintage Park of Lenexa
Mainstreet Credit Union	Overland Park Police	Sacred Heart Catholic School	Shawnee Presbyterian	Wanda's Coffee Shop
Matt Ross Center	Overland Trail Elementary	SafeHome		Wheatridge Middle School
Mazuma Credit Union, South Overland Park	Parents as Teachers	Saint Paul's Preschool		Women's Business Center FastTrac
Mental Illness Support Group at Village Presbyterian Church	Paul Henson YMCA	Santa Fe Towers, Overland Park		The Writers Place
Merriam Park Elementary		Santa Marta Retirement Community		Wyandotte High School

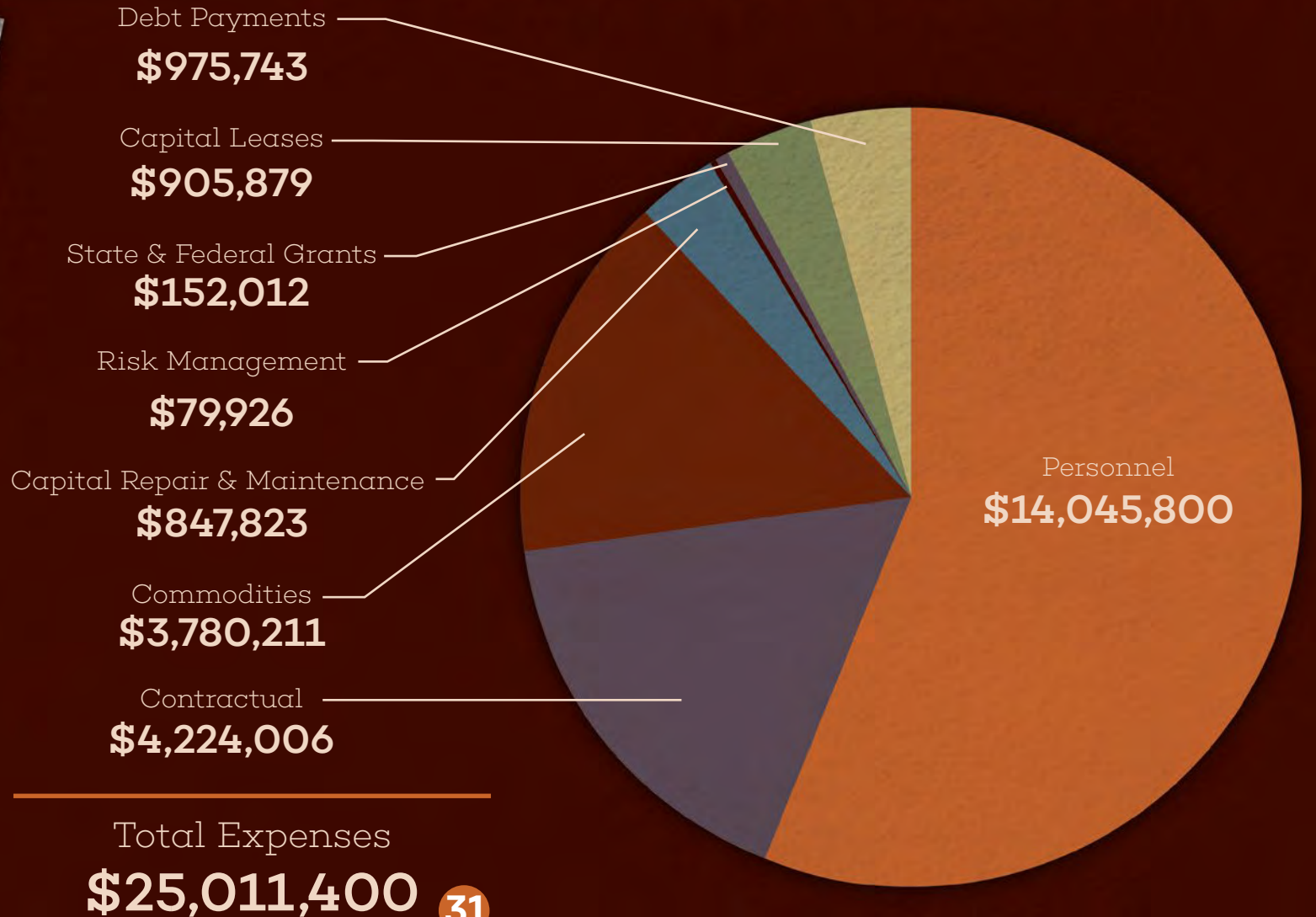


# 2015 REVENUE

## FINANCES



# 2015 EXPENSES



# LOCATIONS



## 1 ANTIOCH LIBRARY

8700 Shawnee Mission Pkwy.

Merriam, KS 66202

Monday – Thursday 9 am – 8 pm

Friday 9 am – 6 pm

Saturday 9 am – 5 pm

Sunday 1 – 5 pm

## 2 BLUE VALLEY LIBRARY

9000 W. 151st • Overland Park, KS 66221

Monday – Thursday 9 am – 8 pm

Friday 9 am – 6 pm

Saturday 9 am – 5 pm

Sunday 1 – 5 pm

## 3 CEDAR ROE LIBRARY

5120 Cedar • Roeland Park, KS 66205

Monday – Thursday 9 am – 8 pm

Friday 9 am – 6 pm

Saturday 10 am – 2 pm

## 4 CENTRAL RESOURCE LIBRARY

9875 W. 87th St. • Overland Park, KS 66212

Monday – Thursday 9 am – 8 pm

Friday 9 am – 6 pm

Saturday 9 am – 5 pm

Sunday 1 – 5 pm

## 5 CORINTH LIBRARY

8100 Mission Rd. • Prairie Village, KS 66208

Monday – Thursday 9 am – 8 pm  
Friday 9 am – 6 pm  
Saturday 9 am – 5 pm  
Sunday 1 – 5 pm

## 6 DESOTO LIBRARY

33145 W. 83rd St. • De Soto, KS 66018

Tues, Wed, Friday 10am – 6 pm  
Thursday 1 – 8 pm  
Saturday 10 am – 2 pm

## 7 EDGERTON LIBRARY

319 E. Nelson • Edgerton, KS 66021

Tues, Wednesday 1 – 6 pm  
Thursday 1 – 8 pm  
Friday 1 – 5 pm  
Saturday 10 am – 2 pm

## 8 GARDNER LIBRARY

137 E. Shawnee • Gardner, KS 66030

Monday – Thursday 9 am – 8 pm  
Friday 9 am – 6 pm  
Saturday 9 am – 5 pm

## 9 LACKMAN LIBRARY

15345 W. 87th St. Pkwy. • Lenexa, KS 66219

Monday – Thursday 9 am – 8 pm  
Friday 9 am – 6 pm  
Saturday 9 am – 5 pm

## 10 LEAWOOD PIONEER LIBRARY

4700 Town Center Dr. • Leawood, KS 66211

Monday – Thursday 9 am – 8 pm  
Friday 9 am – 6 pm  
Saturday 9 am – 5 pm

## 11 OAK PARK LIBRARY

9500 Bluejacket • Overland Park, KS 66214

Monday – Thursday 9 am – 8 pm  
Friday 9 am – 6 pm  
Saturday 9 am – 5 pm

## 12 SHAWNEE LIBRARY

13811 Johnson Dr. • Shawnee, KS 66216

Monday – Thursday 9 am – 8 pm  
Friday 9 am – 6 pm  
Saturday 9 am – 5 pm

## 13 SPRING HILL LIBRARY

109 S. Webster St. • Spring Hill, KS 66083

Monday - Wednesday 10 am – 6 pm  
Thursday 1 – 8 pm  
Friday Closed  
Saturday 10 am – 2 pm

Through its 13 Libraries County-wide, the mission of Johnson County Library is to provide access to ideas, information, experiences and materials that support and enrich people's lives. The Library is supported by ad valorem taxes, by the Friends of Johnson County Library book sales, and by the philanthropic efforts of the Johnson County Library Foundation. Learn more at [www.jocolibrary.org](http://www.jocolibrary.org).